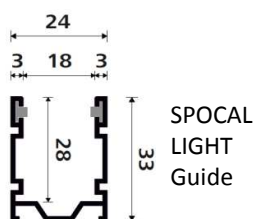
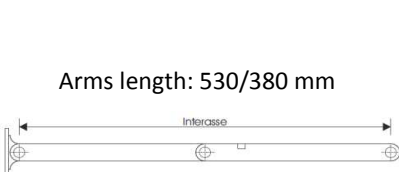


SPOCAL LIGHT LL - TECHNICAL DETAILS



Security Crossbar



Easy line

SPOCAL LIGHT LATERAL LEVER FEATURES

Lateral Lever SPOCAL LIGHT projection frames, packed in the desired sizes, are composed of:

- **Aluminum guide (measures 24x33 mm)** with anti-noise rubber seals (brush seals on request), split on the top for easy entry of rolling shutter.
- **Aluminum crossbar (measures 18x30 mm).**
- **Aluminum arms (length: 530 mm).**
- **Nylon hinges and nylon inner stoppers.**
- **Stainless steel screws** for installation.

This is recommended for opening widths up to a maximum of 1400 mm.

Suitable for rolling shutters from 8 mm to 15 mm of slat thickness.

OPTIONALS

- **Easy line:** Modification to the hinges to allow the rolling shutter movement even when the projection frame is opened outwards.
- **Aluminum hinges.** Available in these colours: Silver anodized, Bronze anodized, Black anodized, White RAL 9010, Ivory RAL 1013, Green RAL 6005, Brown RAL 8017. Other colours available upon request.
- **Arms of 380 mm in length.**
- **Painted arms.** Available in these colours: White RAL 9010, Ivory RAL 1013, Green RAL 6005, Brown RAL 8017. Other colours available upon request.
- **Security crossbar with safety bolts***

HOW TO ORDER:

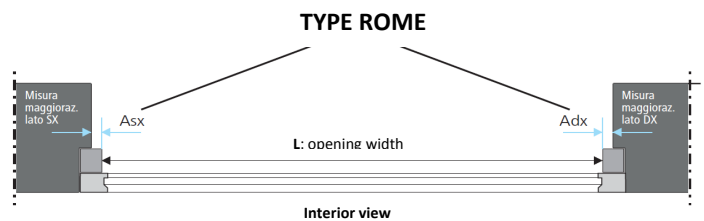
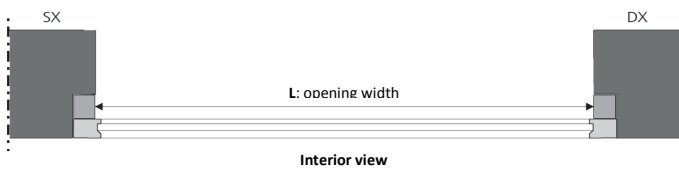
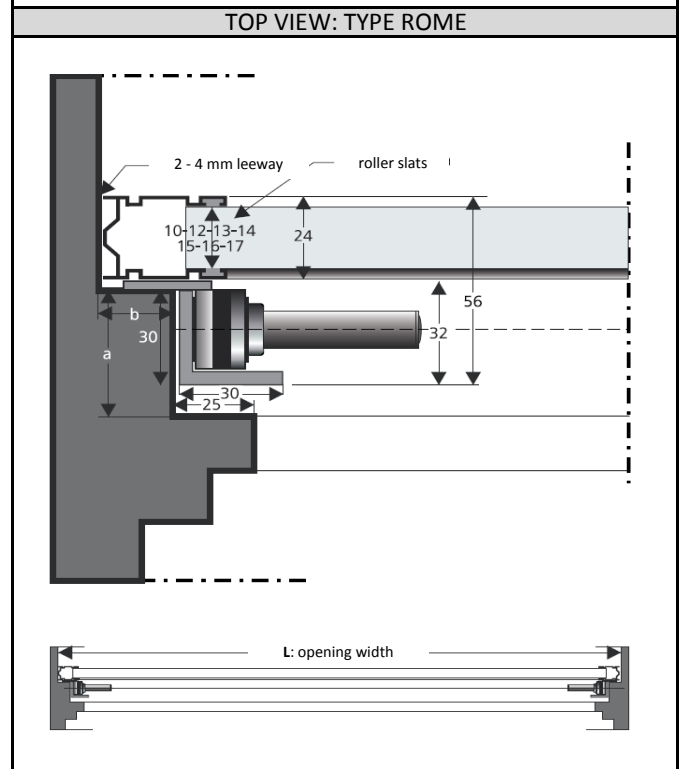
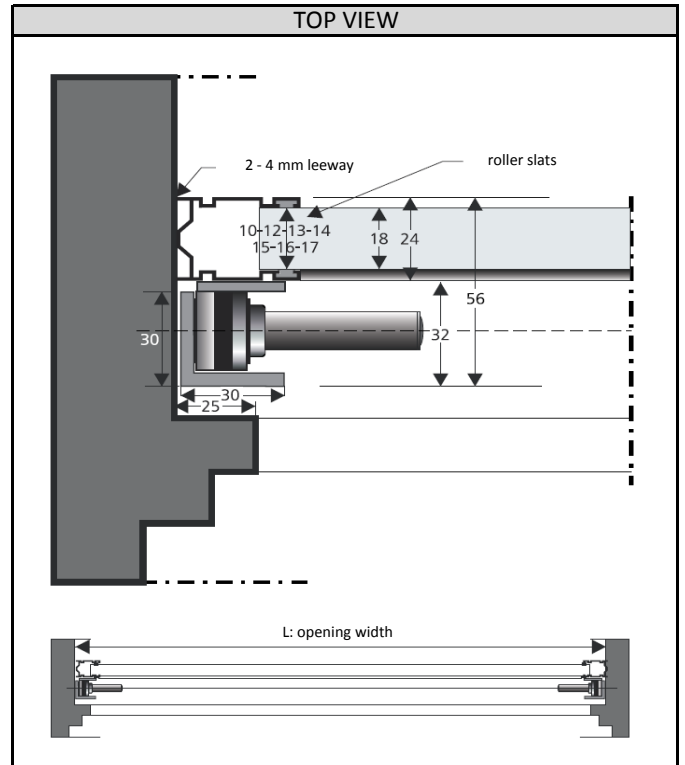
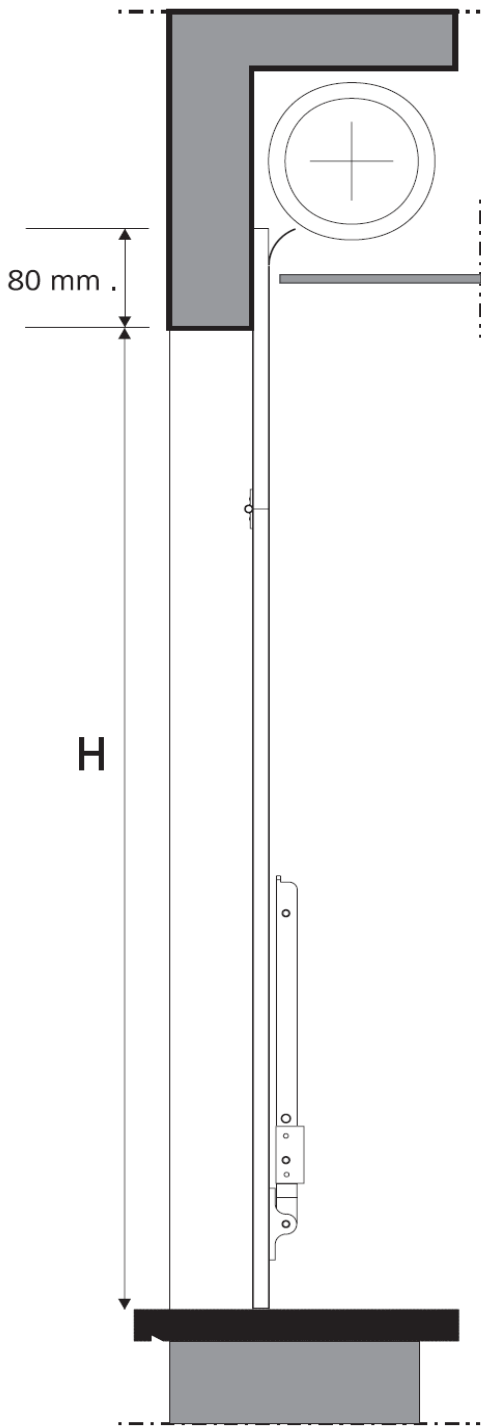
- Provide window opening measurements: **Opening Width (L) X Opening Height (H).** If Type Rome, specify also additional measures of the right and the left side with respect to the opening width.
- **Specify the slat thickness.**
- **Specify projection frame colours and any optionals.**

*with the security crossbar, the inner stoppers are black.

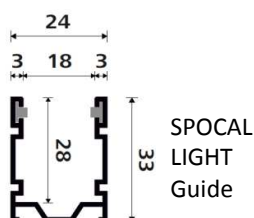
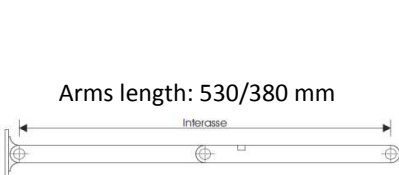
SPOCAL LIGHT LL COLOUR MATCHING

Guides and Crossbars	Arms STANDARD	Nylon Hinges and Inner Stoppers
Silver Anodized	Silver Anodized	Grey
Bronze Anodized	Bronze Anodized	Bronze
Black RAL 9005	Black Anodized	Black
White RAL 9010 - Ivory RAL 1013	Silver Anodized	White - Ivory
Green RAL 6005 - Brown RAL 8017	Black Anodized	Green - Brown
Brown RAL 8014 - Green Olive RAL 6011 - Green Signal RAL 6024 - Moss-Green - Moss-Brown	Black Anodized	Black
Grey RAL 7001	Silver Anodized	Grey
RAL on request	Anodized	Choice between the above colors

SPOCAL LIGHT LL - TECHNICAL DETAILS



SPOCAL LIGHT LC - TECHNICAL DETAILS



Security Crossbar



Easy line



SPOCAL LIGHT CENTRAL LEVER FEATURES

Central Lever SPOCAL LIGHT projection frames, packed in the desired sizes, are composed of:

- **Aluminum guide (measures 24x33 mm)** with anti-noise rubber seals (brush seals on request), split on the top for easy entry of rolling shutter.
- Holes for installation and set up.
- **Aluminum crossbar (measures 18x30 mm).**
- **Aluminum arms (length: 530 mm).**
- **Aluminum rod and handle** in the same colour as arms.
- **Nylon hinges and nylon inner stoppers.**
- **Nylon rest arms LC.**
- **Stainless steel screws** for installation.

This is recommended for windows over 1400 mm in width and up to a maximum of 2500 mm in width.

A double handle and a reinforcement inside the crossbar are installed on the frame for rolling shutters from 2300 mm to 3000 mm wide, unless otherwise specified.

Suitable for rolling shutters from 8 mm to 15 mm of slat thickness.

OPTIONALS

- **Easy line:** Modification to the hinges to allow the rolling shutter movement even when the projection frame is opened outwards.
- **Aluminum hinges.** Available in these colours: Silver anodized, Bronze anodized, Black anodized, White RAL 9010, Ivory RAL 1013, Green RAL 6005, Brown RAL 8017. Other colours available upon request.
- **Arms of 380 mm in length.**
- **Painted arms, rod and handle.** Available in these colours: White RAL 9010, Ivory RAL 1013, Green RAL 6005, Brown RAL 8017. Other colours available upon request.
- **Security crossbar with safety bolts***

HOW TO ORDER:

- Provide window opening measurements: **Opening Width (L) X Opening Height (H).** If Type Rome, specify also additional measures of the right and the left side with respect to the opening width.
- **Specify the slat thickness.**
- **Specify projection frame colours and any optionals.**

*with the security crossbar, the inner stoppers are black.

SPOCAL LIGHT LC COLOUR MARCHING

Guides and Crossbars	Arms, rod and handle STANDARD	Nylon Hinges and Inner stoppers
Silver Anodized	Silver Anodized	Grey
Bronze Anodized	Bronze Anodized	Bronze
Black RAL 9005	Black Anodized	Black
White RAL 9010 - Ivory RAL 1013	Silver Anodized	White - Ivory
Green RAL 6005 - Brown RAL 8017	Black Anodized	Green - Brown
Brown RAL 8014 - Green Olive RAL 6011 - Green Green Signal RAL 6024 - Moss-Green - Moss-Brown	Black Anodized	Black
Grey RAL 7001	Silver Anodized	Grey
RAL on request	Anodized	Choice between the above colors

SPOCAL LIGHT LC - TECHNICAL DETAILS

